

KHSAA Basketball - Game Box Score

Casey County Lady Rebels vs. Johnson Central Lady Eagles

Date: 03/11/09 Time: 8:40 pm EST Site: Diddle Arena-Bowling Green, KY Attendance: 3962

Visitors: Johnson Central Lady Eagles

##	Name	P	FG	3 Pt	FT	PTS	ORB	DRB	TR	PF	AST	TO	BS	ST	MIN
3	* Hayley Meek		1/10	0/0	6/6	8	1	0	1	4	1	3	1	2	27:16
4	Jessica Stacy		0/1	0/0	2/2	2	2	1	3	0	0	1	0	0	2:00
5	Jessica Jude		0/1	0/0	0/0	0	0	1	1	1	0	1	0	0	3:49
11	* Celena Conley		2/5	0/0	1/2	5	1	1	2	4	0	3	0	0	21:02
15	Courtney Mollett		0/0	0/0	2/2	2	0	1	1	1	0	0	0	0	5:35
21	* Chelsey Salyers		1/4	0/2	3/5	5	0	1	1	2	0	1	0	3	28:32
22	Kristen Wireman		0/1	0/0	0/0	0	0	0	0	0	0	0	0	0	1:08
25	Kasi Watson		0/0	0/0	0/0	0	0	1	1	0	0	0	0	0	1:08
32	Dakota McKenzie		0/1	0/0	0/0	0	1	0	1	0	0	0	0	1	2:00
33	* Ashley Young		1/3	0/0	0/0	2	0	1	1	3	0	3	0	1	23:37
34	* Breanna Salyer		1/3	0/0	3/6	5	4	1	5	0	0	0	0	1	22:41
43	Cherysh Workman		0/2	0/0	0/0	0	0	1	1	1	0	0	0	0	2:23
53	Emily Wireman		0/4	0/0	2/4	2	0	7	7	4	1	1	0	0	18:49
14	Destiny Blackburn		0/0	0/0	0/0	0	0	0	0	0	0	0	0	0	DNP
	Team						0	0	0						
	Totals		6/35	0/2	19/27	31	9	16	25	20	2	13	1	8	160
	2 PT FG		1st Half	3/14	21.4%	2nd Half	3/21	14.3%	Game	6/35	17.1%				
	3 PT FG		1st Half	0/0	0.00%	2nd Half	0/2	0.00%	Game	0/2	0.00%				
	Free Throws		1st Half	10/13	76.9%	2nd Half	9/14	64.3%	Game	19/27	70.4%				

Home: Casey County Lady Rebels

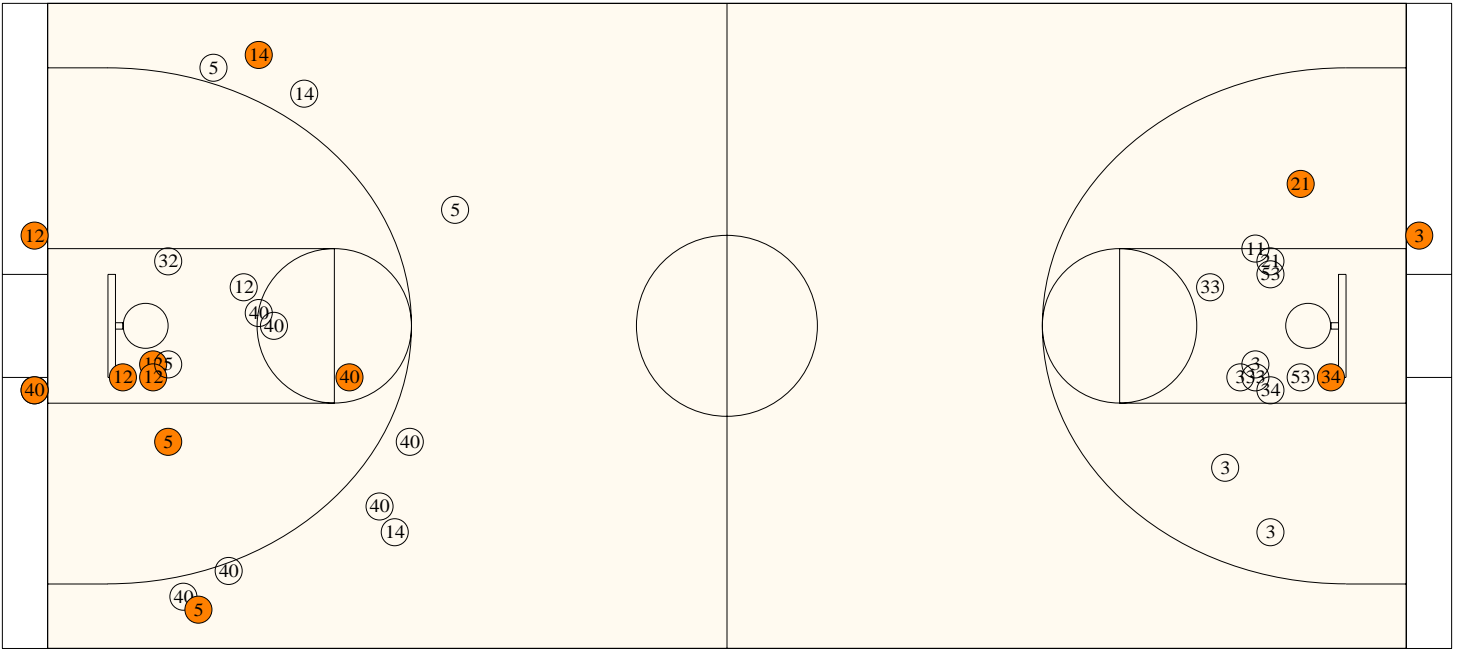
##	Name	P	FG	3 Pt	FT	PTS	ORB	DRB	TR	PF	AST	TO	BS	ST	MIN
00	Jasmine Johnson		0/1	0/0	2/2	2	1	0	1	0	0	1	0	1	9:28
3	Jamie Wesley		0/0	0/0	0/0	0	0	0	0	0	0	0	0	0	1:08
5	* Kayla McFarland		1/6	1/3	7/8	12	2	8	10	2	4	3	0	3	29:24
10	Katy Laman		0/0	0/1	0/0	0	0	1	1	0	0	1	0	0	2:00
12	* Megan Pittman		6/7	0/0	9/11	21	3	5	8	2	1	3	3	1	27:01
14	* Natalie Wesley		0/0	1/3	0/0	3	0	2	2	4	1	0	0	2	25:31
20	Tylyn Leigh		0/0	0/0	0/0	0	1	0	1	1	0	0	0	0	1:08
23	* Nicole Coffman		1/1	0/0	0/0	2	0	0	0	5	0	1	1	0	9:27
24	Katie Douglas		0/1	0/0	0/0	0	0	0	0	0	0	0	0	0	1:08
32	B.J. Houge		1/3	0/0	0/0	2	1	3	4	2	0	1	0	2	13:30
40	* Lauren Hatter		2/5	1/7	5/6	12	0	3	3	4	2	6	0	1	27:08
44	Dezarae Harmon		0/0	0/0	0/0	0	0	1	1	2	0	0	0	0	13:07
	Team						1	2	3						
	Totals		11/24	3/14	23/27	54	9	25	34	22	8	16	4	10	160
	2 PT FG		1st Half	8/13	61.5%	2nd Half	3/11	27.3%	Game	11/24	45.8%				
	3 PT FG		1st Half	2/10	20.0%	2nd Half	1/4	25.0%	Game	3/14	21.4%				
	Free Throws		1st Half	2/2	100%	2nd Half	21/25	84.0%	Game	23/27	85.2%				

	JC	CASEY	JC	CASEY	JC	CASEY		
Free Throw Pts	19	23	3Pt Points	0	9	Pts/Possession	0.56	0.95
Pts off Turnovers	4	14	2nd Chance Points	8	10	Pts off Bench	6	4
Total Rebounds	25	34	Team Rebounds	0	3	Dead Ball Reb	6	2
Off Rebound %	26.5	36.0	Def Rebound %	64.0	73.5	Total Rebound %	42.4	57.6
3Pt Efficiency	-11.4	-9.1	Def. Stops	32	38	Pts/Shot	0.62	1.06
Technical Fouls	JC	None						
Officials	CASEY	None						
	Charlie Chappie, John Boylan, Jr., Kerry Henson							

	Qtr 1	Qtr 2	Qtr 3	Qtr 4	OT 1	OT 2	OT 3	OT 4	Total
Johnson Central Lady Eagles	7	9	6	9	0	0	0	0	31
Casey County Lady Rebels	11	13	13	17	0	0	0	0	54

Largest Lead CASEY 54 **JC** 29 (25 pts) **Lead Changes** 0 **Number of Ties** 1
Comments: None

FIRST HALF



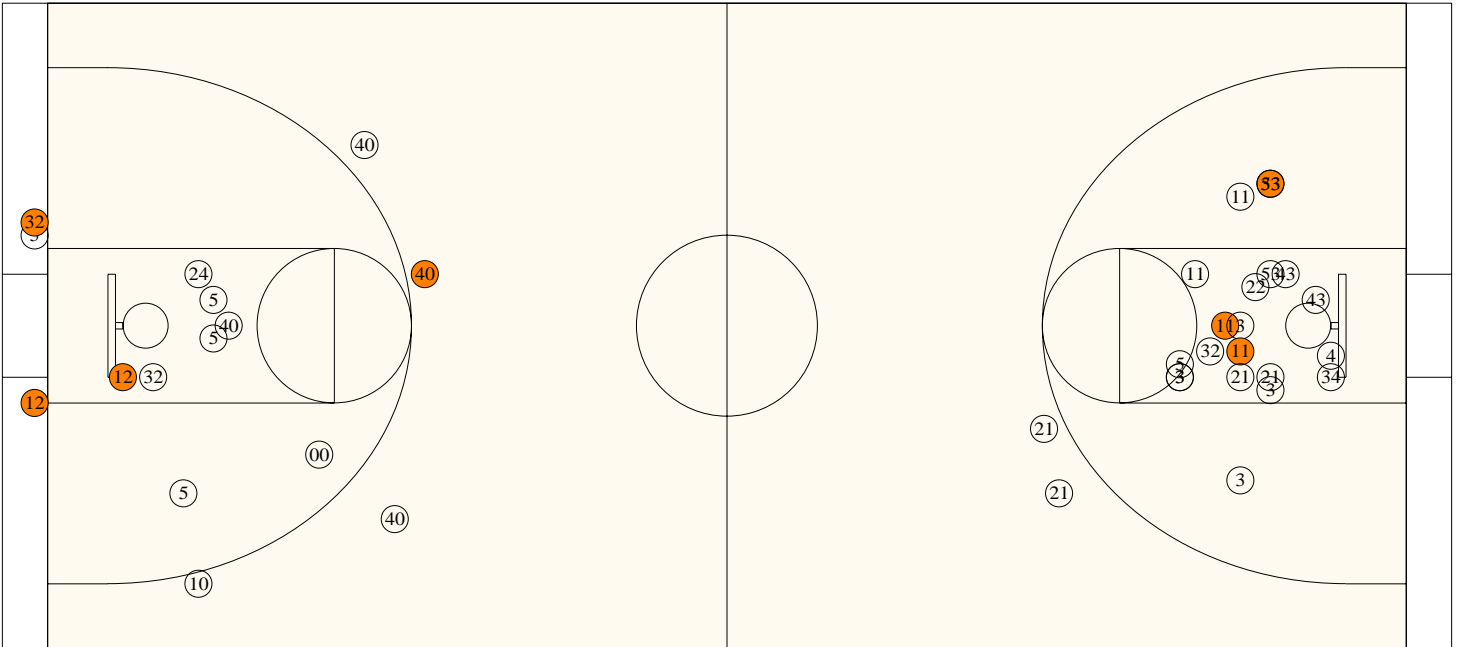
Casey County

Shooting	Pts	Pts
2FG 8/13 (61.5%)	16	Pts/Shot 1.00
3FG 2/10 (20.0%)	6	2nd Eff Pts 4
TFG 10/23 (43.5%)		Pts off TO's 9
FT 2/2 (100%)	2	3Pt Eff -21.0
Scoring Distribution: 2FG 66.7% 3FG 25.0% FT 8.3%		

Johnson Central

Shooting	Pts	Pts
2FG 3/14 (21.4%)	6	Pts/Shot 0.80
3FG 0/0 (0.00%)	0	2nd Eff Pts 5
TFG 3/14 (21.4%)		Pts off TO's 2
FT 10/13 (76.9%)	10	3Pt Eff
Scoring Distribution: 2FG 37.5% 3FG 0.0% FT 62.5%		

SECOND HALF



Casey County

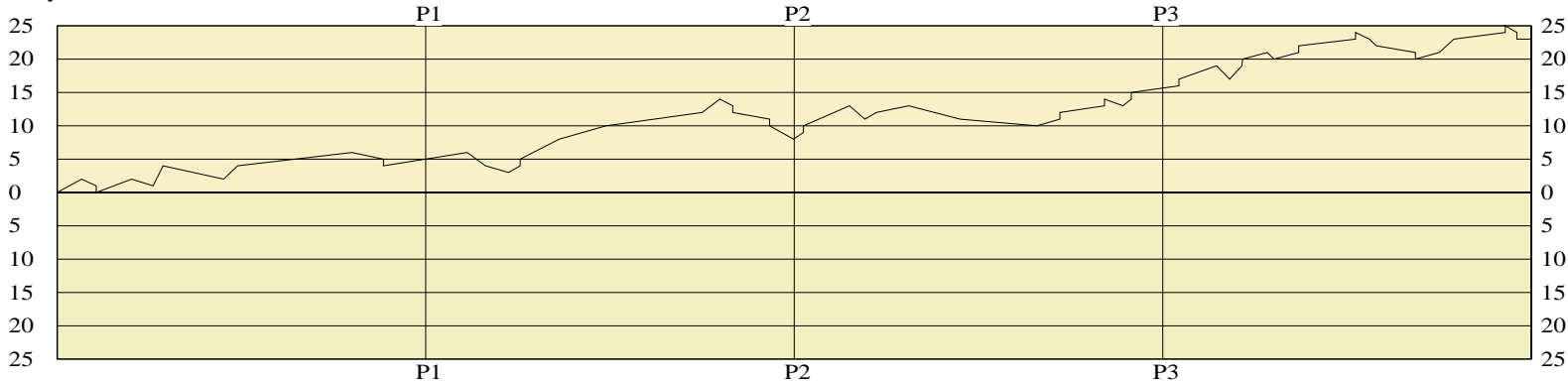
2FG 3/11 (27.3%)	6ts	Pts/Shot 1.11
3FG 1/4 (25.0%)	3	2nd Eff Pts 6
TFG 4/15 (26.7%)		Pts off TO's 5
FT 21/25 (84.0%)	21	3Pt Eff +6.8
Scoring Distribution: 2FG 20.0% 3FG 10.0% FT 70.0%		

Johnson Central

2FG 3/21 (14.3%)	6ts	Pts/Shot 0.50
3FG 0/2 (0.00%)	0	2nd Eff Pts 3
TFG 3/23 (13.0%)		Pts off TO's 2
FT 9/14 (64.3%)	9	3Pt Eff -9.5
Scoring Distribution: 2FG 40.0% 3FG 0.0% FT 60.0%		

Lady Rebels

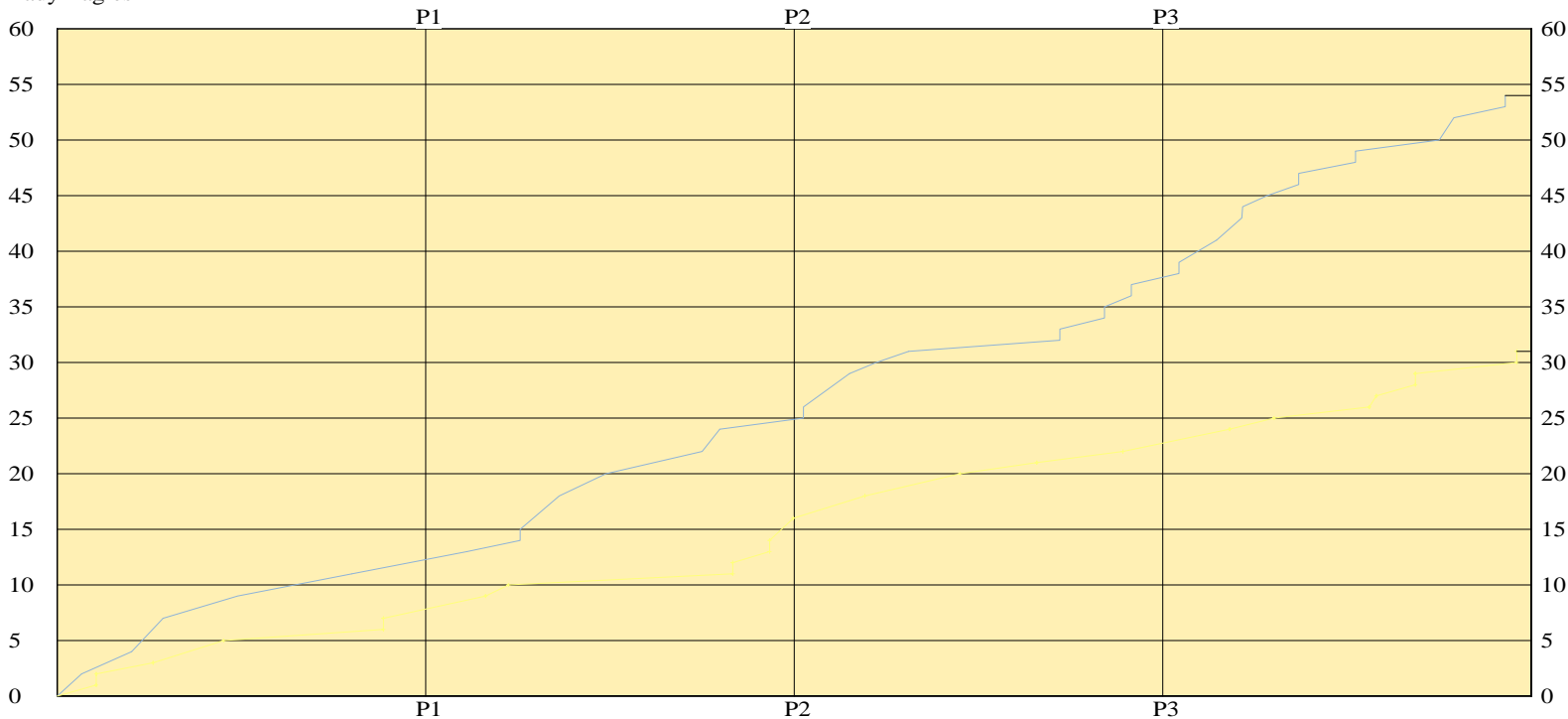
LEAD TIMELINE



Lady Eagles

Lady Rebels
 Lady Eagles

SCORING TIMELINE



Largest Lead CASEY 54 JC 29 (25 pts) Lead Changes 0 Number of Ties 1

KHSAA Basketball - Play by Play Report - Scoring Only (pg 1)

Casey County Lady Rebels vs. Johnson Central Lady Eagles

Date: 03/11/09 Time: 8:40 pm EST Site: Diddle Arena-Bowling Green, KY Attendance: 3962

Name	Action	Action	Score	Clock	Diff	Name	Action	Action
N Coffman	Layup Made	L Hatter Assist	2-0	1 7:28	+2 (L1)			
N Coffman	Personal Foul		2-1	1 7:09	+1	H Meek	FT Made	
			2-2	1 7:09	(T1)	H Meek	FT Made	
M Pittman	Putback Made		4-2	1 6:23	+2			
N Coffman	Personal Foul		4-3	1 5:55	+1	C Conley	FT Made	
N Wesley	3Pt Made	M Pittman Assist	7-3	1 5:42	+4			
			7-5	1 4:23	+2	C Salyers	FG Made	
M Pittman	FG Made		9-5	1 4:05	+4			
K McFarland	FG Made		11-5	1 1:36	+6			
			11-6	1 0:55	+5	C Salyers	FT Made	
			11-7	1 0:55	+4	C Salyers	FT Made	

End of Period Summary Lady Rebels 11 Lady Eagles 7

Largest Lead: Lady Rebels 11 Lady Eagles 5 (6 pts)

Lead Changes: 1 Ties: 1

Lead in Period: Lady Rebels 11 Lady Eagles 5 (6 pts)

Lead Changes: 0 Ties: 1 (this period)

5 for 2 oppo pts

Turnovers

5 for 2 oppo pts

3 for 4 pts

2nd Chances

2 for 3 pts

5/13 for 38.5 %

Field Goals

1/8 for 12.5 %

0/0 for 0.00 %

Free Throws

5/6 for 83.3 %

L Hatter	FG Made	K McFarland Assist	13-7	2 7:06	+6			
			13-9	2 6:42	+4	H Meek	Layup Made	
			13-10	2 6:12	+3	B Salyer	FT Made	
K McFarland	FT Made		14-10	2 5:57	+4	E Wireman	Personal Foul	
K McFarland	FT Made		15-10	2 5:57	+5			
K McFarland	3Pt Made	L Hatter Assist	18-10	2 5:06	+8			
M Pittman	Layup Made	N Wesley Assist	20-10	2 4:05	+10			
M Pittman	FG Made		22-10	2 2:00	+12			
L Hatter	Layup Made		24-10	2 1:37	+14			
			24-11	2 1:20	+13	H Meek	FT Made	
			24-12	2 1:20	+12	H Meek	FT Made	
L Hatter	Personal Foul		24-13	2 0:32	+11	H Meek	FT Made	
			24-14	2 0:32	+10	H Meek	FT Made	
			24-16	2 0:01	+8	B Salyer	Putback Made	

End of Period Summary Lady Rebels 24 Lady Eagles 16

Largest Lead: Lady Rebels 24 Lady Eagles 10 (14 pts)

Lead Changes: 1 Ties: 1

Lead in Period: Lady Rebels 24 Lady Eagles 10 (14 pts)

Lead Changes: 0 Ties: 0 (this period)

2 for 0 oppo pts

Turnovers

3 for 7 oppo pts

1 for 0 pts

2nd Chances

1 for 2 pts

5/10 for 50.0 %

Field Goals

2/6 for 33.3 %

2/2 for 100 %

Free Throws

5/7 for 71.4 %

M Pittman	FT Made		25-16	3 7:48	+9	C Conley	Personal Foul	
M Pittman	FT Made		26-16	3 7:48	+10			
L Hatter	3Pt Made	K McFarland Assist	29-16	3 6:48	+13			
			29-18	3 6:28	+11	C Conley	FG Made	H Meek Assist
M Pittman	FT Made		30-18	3 6:13	+12	C Conley	Personal Foul	
M Pittman	FT Made		31-18	3 5:31	+13			
			31-20	3 4:24	+11	A Young	FG Made	E Wireman Assist
			31-21	3 2:44	+10	B Salyer	FT Made	

KHSAA Basketball - Play by Play Report - Scoring Only (pg 2)

Casey County Lady Rebels vs. Johnson Central Lady Eagles

Date: 03/11/09 Time: 8:40 pm EST Site: Diddle Arena-Bowling Green, KY Attendance: 3962

Name	Action	Action	Score	Clock	Diff	Name	Action	Action
M Pittman	FT Made		32-21	3	2:14 +11	E Wireman	Personal Foul	
M Pittman	FT Made		33-21	3	2:14 +12			
M Pittman	FT Made		34-21	3	1:16 +13			
M Pittman	FT Made		35-21	3	1:16 +14			
			35-22	3	0:52 +13	B Salyer	FT Made	
K McFarland	FT Made		36-22	3	0:41 +14	H Meek	Personal Foul	
K McFarland	FT Made		37-22	3	0:41 +15			

End of Period Summary Lady Rebels 37 Lady Eagles 22

Largest Lead: Lady Rebels 37 Lady Eagles 22 (15 pts)

Lead in Period: Lady Rebels 37 Lady Eagles 22 (15 pts)

4 for 1 oppo pts

3 for 2 pts

1/6 for 16.7 %

10/12 for 83.3 %

Turnovers

2nd Chances

Field Goals

Free Throws

Lead Changes: 1 Ties: 1

Lead Changes: 0 Ties: 0 (this period)

2 for 3 oppo pts

3 for 1 pts

2/11 for 18.2 %

2/4 for 50.0 %

K McFarland	FT Made		38-22	4	7:39 +16	A Young	Personal Foul	
K McFarland	FT Made		39-22	4	7:39 +17			
M Pittman	Putback Made		41-22	4	6:50 +19			
			41-24	4	6:33 +17	C Conley	FG Made	
M Pittman	Layup Made	K McFarland Assist	43-24	4	6:17 +19			
M Pittman	FT Made		44-24	4	6:16 +20	C Salyers	Personal Foul	
L Hatter	FT Made		45-24	4	5:44 +21			
			45-25	4	5:35 +20	E Wireman	FT Made	
L Hatter	FT Made		46-25	4	5:03 +21			
L Hatter	FT Made		47-25	4	5:03 +22			
L Hatter	FT Made		48-25	4	3:49 +23			
L Hatter	FT Made		49-25	4	3:49 +24			
			49-26	4	3:31 +23	E Wireman	FT Made	
K McFarland	Personal Foul		49-27	4	3:22 +22	C Salyers	FT Made	
			49-28	4	2:31 +21	C Mollett	FT Made	
			49-29	4	2:31 +20	C Mollett	FT Made	
K McFarland	FT Made		50-29	4	2:00 +21			
B Houge	Layup Made	K McFarland Assist	52-29	4	1:41 +23			
J Johnson	FT Made		53-29	4	0:34 +24	J Jude	Personal Foul	
J Johnson	FT Made		54-29	4	0:34 +25			
T Leigh	Personal Foul		54-30	4	0:19 +24	J Stacy	FT Made	
			54-31	4	0:19 +23	J Stacy	FT Made	

End of Period Summary Lady Rebels 54 Lady Eagles 31

Largest Lead: Lady Rebels 54 Lady Eagles 29 (25 pts)

Lead in Period: Lady Rebels 54 Lady Eagles 29 (25 pts)

5 for 1 oppo pts

2 for 4 pts

3/9 for 33.3 %

11/13 for 84.6 %

Turnovers

2nd Chances

Field Goals

Free Throws

Lead Changes: 1 Ties: 1

Lead Changes: 0 Ties: 0 (this period)

3 for 2 oppo pts

3 for 2 pts

1/12 for 8.33 %

7/10 for 70.0 %

OFFICIAL BASKETBALL BOX SCORE
Johnson Central Lady Eagles vs Casey County Lady Rebels

03/11/09 8:40 pm EST
Final Box Score

Diddle Arena
Bowling Green, KY

No.	Johnson Central Lady Eagles	Total FG		3-point		Free throw		Rebounds			F	TP	A	TO	BLK	STL	MIN
		FG	FGA	FG	FGA	FT	FTA	Off	Def	Tot							
3	Hayley Meek	1	10	0	0	6	6	1	0	1	4	8	1	3	1	2	27:16
4	Jessica Stacy	0	1	0	0	2	2	2	1	3	0	2	0	1	0	0	2:00
5	Jessica Jude	0	1	0	0	0	0	0	1	1	1	0	0	1	0	0	3:49
11	Celena Conley	2	5	0	0	1	2	1	1	2	4	5	0	3	0	0	21:02
15	Courtney Mollett	0	0	0	0	2	2	0	1	1	1	2	0	0	0	0	5:35
21	Chelsey Salyers	1	6	0	2	3	5	0	1	1	2	5	0	1	0	3	28:32
33	Ashley Young	1	3	0	0	0	0	0	1	1	3	2	0	3	0	1	23:37
34	Breanna Salyer	1	3	0	0	3	6	4	1	5	0	5	0	0	0	1	22:41
53	Emily Wireman	0	4	0	0	2	4	0	7	7	4	2	1	1	0	0	18:49
43	Cherysh Workman	0	2	0	0	0	0	0	1	1	1	0	0	0	0	0	2:23
32	Dakota McKenzie	0	1	0	0	0	0	1	0	1	0	0	0	0	0	1	2:00
22	Kristen Wireman	0	1	0	0	0	0	0	0	0	0	0	0	0	0	0	1:08
25	Kasi Watson	0	0	0	0	0	0	0	1	1	0	0	0	0	0	0	1:08
14	Destiny Blackburn	0	0	0	0	0	0	0	0	0	0	0	0	0	0	0	DNP
Team (Included in Totals)								0									
Totals		6	37	0	2	19	27	9	16	25	20	31	2	13	1	8	160
Total FG%: 1st half 3 - 14 (21.4%)		2nd half 3 - 23 (13.0%)		Game 6 - 37 (16.2%)		Deadball											
3Pt FG%: 1st half 0 - 0 (0.00%)		2nd half 0 - 2 (0.00%)		Game 0 - 2 (0.00%)		rebounds											
FT%: 1st half 10 - 13 (76.9%)		2nd half 9 - 14 (64.3%)		Game 19 - 27 (70.4%)		6											

No.	Casey County Lady Rebels	Total FG		3-point		Free throw		Rebounds			F	TP	A	TO	BLK	STL	MIN
		FG	FGA	FG	FGA	FT	FTA	Off	Def	Tot							
00	Jasmine Johnson	0	1	0	0	2	2	1	0	1	0	2	0	1	0	1	9:28
3	Jamie Wesley	0	0	0	0	0	0	0	0	0	0	0	0	0	0	0	1:08
5	Kayla McFarland	2	9	1	3	7	8	2	8	10	2	12	4	3	0	3	29:24
10	Katy Laman	0	1	0	1	0	0	0	1	1	0	0	0	1	0	0	2:00
12	Megan Pittman	6	7	0	0	9	11	3	5	8	2	21	1	3	3	1	27:01
40	Lauren Hatter	3	12	1	7	5	6	0	3	3	4	12	2	6	0	1	27:08
14	Natalie Wesley	1	3	1	3	0	0	0	2	2	4	3	1	0	0	2	25:31
32	B.J. Houge	1	3	0	0	0	0	1	3	4	2	2	0	1	0	2	13:30
44	Dezarae Harmon	0	0	0	0	0	0	0	1	1	2	0	0	0	0	0	13:07
23	Nicole Coffman	1	1	0	0	0	0	0	0	0	5	2	0	1	1	0	9:27
20	Tylyn Leigh	0	0	0	0	0	0	1	0	1	1	0	0	0	0	0	1:08
24	Katie Douglas	0	1	0	0	0	0	0	0	0	0	0	0	0	0	0	1:08
Team (Included in Totals)								1									
Totals		14	38	3	14	23	27	9	25	34	22	54	8	16	4	10	160
Total FG%: 1st half 10 - 23 (43.5%)		2nd half 4 - 15 (26.7%)		Game 14 - 38 (36.8%)		Deadball											
3Pt FG%: 1st half 2 - 10 (20.0%)		2nd half 1 - 4 (25.0%)		Game 3 - 14 (21.4%)		rebounds											
FT%: 1st half 2 - 2 (100%)		2nd half 21 - 25 (84.0%)		Game 23 - 27 (85.2%)		2											

Technical Fouls: None

Attendance: 3962

Officials: Charlie Chappie, John Boylan, Jr., Kerry Henson

Score by Period	1st	2nd	3rd	4th	Final	Record	Overall	Conf
Johnson Central Lady Eagles	7	9	6	9	31	Lady Eagles		
Casey County Lady Rebels	11	13	13	17	54	Lady Rebels		

	Lady Rebels	Lady Eagles		Lady Rebels	Lady Eagles		Lady Rebels	Lady Eagles
Points off Turnovers	14	4	Second Effort Points	10	8	Bench Points	4	6
Points in the Paint	18	6	3 Point Points	9	0	Free Throw Points	23	19
3pt Efficiency	-9.1	-11.4	Points/Shot	1.06	0.62	Defensive Stops	38	32
Largest Lead	54	29	(25 pts)	Lead Changes	0	Number of Ties	1	

Game comments: None